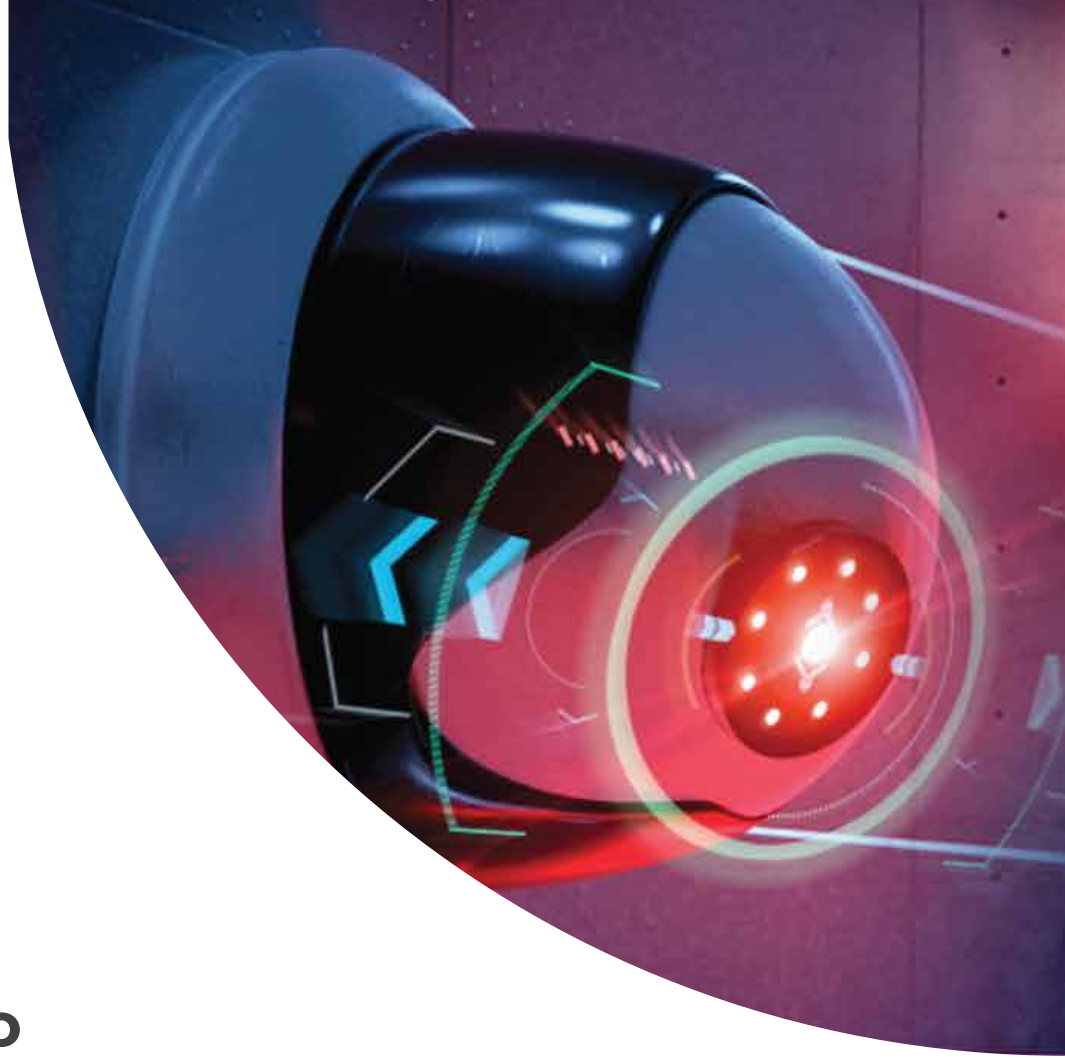


Company

Profile





Welcome to

OUR COMPANY

ETAD is professional to build strong relationship with the clients by providing pre services by presenting free network design, site survey and written quotation services. ETAD is Competitive in relation to the cost of the quotations which is provided a fixed inclusive cost with no hidden financial requirements.



Company
Profile



TABLE OF CONTENTS

● About Company	P 03
● Products	P 05
● Services	P 09
● References	P 12
● Our Suppliers	P 18

WHO WE ARE?

HIGH QUALITY PROFESSIONAL INSTALLATIONS IS ACHIEVED BY CREATIVE DESIGN, BRAINSTORMING AND ATTENTION TO DETAIL. THE NEEDS OF TOMORROW'S BUSINESSES ARE DIFFICULT TO PREDICT, THAT'S WHY SPECIFYING THE RIGHT INFRASTRUCTURE FOR YOUR COMMUNICATIONS NETWORK IS IMPORTANT AND CRITICAL; THE SYSTEM IS SHOULD NOT ONLY BE ABLE TO COPE WITH TODAY'S DEMANDING INTERNET, VIDEOCONFERENCING, E-MAIL AND MULTIMEDIA APPLICATIONS, BUT ALSO ACCOMMODATE THE UPCOMING APPLICATIONS OF TOMORROW.



Etad Solutions is professional to build strong relationship with the clients by providing pre services by presenting free network design, site survey and written quotation services.



The Project Management is so sufficient and we insure keeping the time frame of the project through our professional managers and restricted project plan.



Etad Solutions is Competitive in relation to the cost of the quotations which is provided a fixed inclusive cost with no hidden financial requirements.



Our Project Managers are expert of dealing with the customer, the technology and the Solution. They prompt responses and emergency plans for any challenges could occur during the implementing of the project with flexibility and urgent action plan.

FINALLY, ETAD SOLUTIONS IS CONSIDERED AS A CREATIVE TEAM WITH EFFICIENCY AND PROFESSIONAL EXPERIENCE AS CLIENT YOU WILL PLEASED TO DEAL WITH.



OUR VISION

Etad Solutions providing a professional service in networking infrastructure, physical security systems, and communication standing on high level strategy by mixing the expert's stuff with new Saudi graduate stuff giving them the opportunity to engaged with business and market to start their life by Rise their capabilities with high level training. Etad Solutions hunting the special projects with high technologies not only ordinary projects.



OUR MISSION

"Provide a leading edge one stop solution for all Networking business needs, backed up by a team which is passionately committed to providing an outstanding customer service."

"Your affordable source for expert service"

Our Team

OUR CREATIVE TEAM

EVERYONE SAYS IT, BUT IN OUR CASE IT'S TRUE: OUR TEAM IS THE SECRET TO OUR SUCCESS. EACH OF OUR EMPLOYEES IS AMAZING IN THEIR OWN RIGHT, BUT TOGETHER THEY ARE WHAT MAKES ETAD SOLUTIONS SUCH A FUN AND REWARDING PLACE TO WORK. THE ETAD SOLUTIONS TEAM IS A TIGHT-KNIT, TALENTED GROUP WITH A SHARED VISION OF DELIVERING CONSISTENTLY GREAT RESULTS FOR OUR CLIENTS, AS WELL AS ENSURING THE AGENCY IS A FUN, INCLUSIVE, CHALLENGING PLACE TO WORK AND DEVELOP A REWARDING CAREER.



Solution

SECURITY SOLUTIONS

Etad Solutions helps companies in every industry see and eliminate threats, secure valuable assets, and solve pressing security challenges.

Etad Solutions provides the following solutions and systems:



- **Monitoring Solutions and control rooms:** Etad Solutions has the experience to combine the various technologies involved in monitoring and make them work reliably as one total solution. There are a lot of different products, platforms and technologies to be considered when we design a monitoring system; IP Cameras, Analog Cameras and CCTV management system, with web connectivity, you access your camera with a secured login to watch live recording of the camera or historical recordings from anywhere around the globe.

Over the years we have learned what works well and what does not. We give you the fruit of our accumulated knowledge.

Camera Management System is integrated with the industry's first Automated Surveillance Action Platform (ASAP), our systems are capable of automated and sophisticated responses to complex inputs. We provide users with a sophistication that was not previously possible with traditional systems. The system accepts inputs such as condition-monitoring, noise waves, and physical sensors that provide vibrations and report live data to keep you safe and informed.

- **Access Control and time attendance:** From single store to chain of retails or the whole

edifice Access Control Systems (ACS) is designed to control Access for Employees and visitors by utilizing multiple technologies such as swipe cards, proximity cards, PIN entry keypads, and sophisticated biometric devices, security systems can be designed around existing hardware to provide an effective solutions for a single or multiple sites.

Time Attendance System allows the company to manage, monitor employee entries, exits, breaks, absence and leaves. Time Attendance system enables to prepare a detail report of employees who are not holding up to your standards of employment.





• **Physical security (access gates, road blockers, bollards, x-ray solutions, under vehicles, alarming system and sensors):**

Etad Solutions can supply, deliver, and install a wide range of:

1- Access gates: This type of entrance not only supports disabled access but also provides a comfortable alternative to users such as those who are carrying large bags, pushing prams – or simply older and more comfortable with a wider option.

2- Road blockers: Road Blockers and Tyre Killers are heavy duty and anti-terrorist barriers that are installed at high-sensitive areas where unauthorized vehicle have strict restrictions for access. They are installed with an intention to block the roadways for vehicle passage and to obstruct the vehicle based attacks.

3- Bollards: bollard is a **short post used to create a protective or architectural perimeter**. When installed primarily as a visual guide, they guide traffic and mark boundaries. ... Bollards can also be constructed to physically block vehicle incursion, protecting people and property.

4- X-ray solutions: scan can be performed by just placing the measurement subject within the equipment, with no need to move the measurement subject.



5- Under vehicles: uses color area scanning technology to effectively scan and inspect the undercarriage of vehicles to search and analyze images for explosive devices, suspicious objects or contraband such as drugs and weapons. The system is ideal for government, military, transportation, and corporation facilities requiring security checkpoints for vehicles such as vans, tractor trailers, buses, and passenger vehicles.

6- Alarming system and sensors: Etad Solutions Networking Systems Alarm System will keep your employees safe and protect your company's important assets. Protect your people and property with our market-leading systems

• **RFID Solutions:** parking system, document tracking and baby tracking system.





• **Fire Alarm System:**

Safety and compliance of fire codes is required by law, but not everyone takes the proper precautions to ensure their personal safety. If you're concerned that your fire-safety systems are not up to par, let us send in our certified experts to remedy the problem.

Etad Solutions Networking Systems Fire Alarm System will keep your employees safe and protect your company's important assets. Protect your people and property with our market-leading systems. They can be tailored for a wide range of buildings, applications and markets, and our technology and comprehensive maintenance can make your job easier by improving serviceability and saving time.



Solution

AUDIO VISUAL SYSTEM



We at Etad solution offers the latest equipment in Audio, Visuals, Simultaneous Interpretation, Projection, Lights, Sound, Public Address, Digital Signage Solution, Video Conference, We realize that you only have one chance to make a great presentation. We offer reliable and creative solutions backed with the latest technology & excellent customer service.

Our professionals will design the right audio video solution for your next venue delivering crystal clear sound to all ends of the room with intelligent, state of the art lighting systems to enhance your meeting.



Solution

NETWORKING & INFRA-STRUCTURE

Etad solutions can provide the following services:

- **NETWORK INFRASTRUCTURE:**

Etad solutions can supply and install all the networking active components from deferent suppliers depending on the project needs. We can provide both industrial and normal solution.

Etad Solutions can provide all the solutions related to Wi-Fi, microwave solutions (PTP and PTMP) and controllers.

Etad Solutions has many partners like Cisco, Aruba, Planet, Dell, Uni-fi:

- **PASSIVE COMPONENTS:**

Structured cabling systems are becoming increasingly complex and sophisticated, meeting greater demands and workloads. With emerging connectivity developments in

Hardware and software, structured cabling system tolerances are becoming ever more stringent. A networks physical infrastructure must incorporate security and integrity into its inherent design, as well as the ability to adapt to changes in technology. Etad Solution Technologies experienced and dedicated team provides an end to end service from design to implementation. Etad Solution Technologies designs and builds cabling infrastructure systems that support multiple voice, data, video and multimedia systems.



• Wireless Solutions:

We mobile your business to be accessed from anywhere, at any time, from any device. Etad Solutions unify the mobility network, secure, manage mobile devices, and create an open ecosystem for mobility applications.

You can even implement mobility across disparate networks. This means the barriers between personal, private, and public networks disappear, delivering a consistent mobility experience. In this area Etad Solutions covers the whole wireless rollout process, from design to maintenance and day-to-day operations.

• Types of Solutions:

1. Wi-Fi Solution:

Etad Solutions providing all the needed services and design that related to Wi-Fi systems for all active devices companies (Cisco, Aruba, Ruckus.....ect).

The service that we provide depends on surveying and planning the sites with the following process:

- Studying the site.
- Heat Maps designing.
- Distributing Access points.
- Installing cable infrastructure depending on the access points locations even it's indoor/outdoor.

2. Connecting point to point (PTP): Point-to-Point wireless connections are used to connect two locations together using directional antennas with LoS (Line of Sight). They use a combination of small, powerful, highly-directional aerials, routers, and cables to set up the connection

- Enterprise wireless networks: Some enterprises (especially IT) want to have their own independent network infrastructure for secure communication without additional monthly costs. With wireless PTP technologies this need can be easily realized. For private connectivity we suggest short range Links.

- Building-to-building connectivity: Building-to-building wireless connectivity can be effectively used in areas under the same administrative policy as campus, hospital buildings, school etc.



3. Long Range Wi-Fi:

Everyone wants stable internet connection extending through their homes, as well as in other buildings on their lot. The bigger the building and more properties there are, the more difficult and costly it can be. Group that with remote properties far from established Internet infrastructure, and problems become apparent. However, there are solutions.

Long-range Wi-Fi networks are cost effective to set up which can help enhance your internet connection throughout your building; whether it's to split the internet connection with another building or simply extend the Wi-Fi signal outdoors.

There are three types of network extender systems:

1. **Indoor Wi-Fi Extenders:** Sometimes a Wi-Fi router is not enough to provide a reliable wireless network in every area of your home or office. Mesh networks and Range extenders help resolve this problem.
 - **Mesh networks** are a group of nodes that work together to cover your entire home or office with great Wi-Fi coverage. One node will be directly connected to the modem for internet access and the other nodes will be placed around your house. The main node will cordlessly distribute its internet connection with the other nodes to distribute the Wi-Fi signal into the desired areas. Mesh networks create a seamless connection throughout your entire home. As you move around, your Wi-Fi devices will automatically connect to the node that is closest to them.
 - **Range extenders** (also known as a Wi-Fi booster) are wireless tools that connect to the router to extend the Wi-Fi range. For optimal results, they are placed in a location where its close enough to the router to get a good signal, but far enough away that it can cover the areas that have little to no signal. When using a range extender, it's like having two cordless routers in your home. The extender will have its own network name (SSID) and password. As you move around your house, you might have to physically switch between your home network and the extender's network, depending on which is closest to your Wi-Fi devices.

2. Long-Range Point to Point Networks: They traverse your internet connection between two buildings. Sometimes this can be achieved by obtaining another internet plan or a Wi-Fi hotspot, but this can be costly. Ultimately, point to point networks can save you money while benefiting from reliable internet in two locations.

3. Long-Range Wi – Fi for IOT System: Etad Solutions provide and install the infrastructure for long range Wi-Fi gateways that using high frequency signal by studying the customer case and provide them the best solution for IOT (The Internet of Things) systems to serve them in their fields for the following sectors:



1. Smart buildings.
2. Industrial solution
3. Health care solution.
4. Asset tracking.
5. Smart metering.

Etad Solutions study the site and give the best design for the locations of the gateways that work based on LORA technology to cover all the sensors presented in the site depending on the site nature and the sensors requirements that used in the solution.





- **NETWORK SECURITY & FIREWALL:**

We implement Firewall & Anti-Virus setup as per the need and demand of Customer Network.

- **DATA CENTER SETUP:**

Data center technology is critical to overall organization. Not only it houses critical network systems which are vital to the daily operations of modern organizations, it is also one of biggest investments for the organization. To maintain your data center servers and storage devices, Etad Solutions.

Networking & Solutions offers different levels of maintenance and support that best align to the customer business needs.

References

1. Vanderlande - Dammam airport: CCTV and Network infrastructure for monitoring baggage system.
2. Taqniyat - Al Othaim Mall: Covering the mall by Wi-Fi system.
3. TANMIAH: Installing the Data center infrastructure.
4. MDS: Installing the Data center infrastructure for many MDS projects.
5. ENOVA: maintenance contract for many sites.
6. King Fahed Medical city: monitoring the labs refrigerators sensors by long range Wi-Fi solution.
7. SAR Station: Monitoring the pumps control system sensors by using long range Wi-Fi.
8. PIF offices in KAFD tower.
9. FII: Data infrastructure for FII offices in the Digital city.
10. STC preventive maintenance for all the CCTV system in KSA.
11. NBU: infrastructure and fiber cable.
12. Tabouk university: PTP project.

SERVICES



1• Presales:

Etad Solutions provides data cabling installation solutions for every facet of your company's communication needs. Etad Solutions provides comprehensive structured cabling installation services for both indoor and outdoor voice and data connectivity, including single, multi building and campus environments. Our team can help identify and fulfill your equipment needs through site survey and pricing all needs, categorized into the following stages:

- Pricing: includes Site Survey and pricing the project.
- Design: how to connect the system.
- Planning: how to install system.

2• Consulting:

Management consulting is helping organizations improve their performance, primarily by analyzing problems and developing plans to improve existing organizations. Organizations need the services of management consultants for a number of reasons, including gaining new expertise from outside the system and accessing the expertise of specialist consultants.

Etad Solutions providesSupervising the installation and programming of everything related to the project for the site from the beginning of work until delivery.

3• After Sales Service:

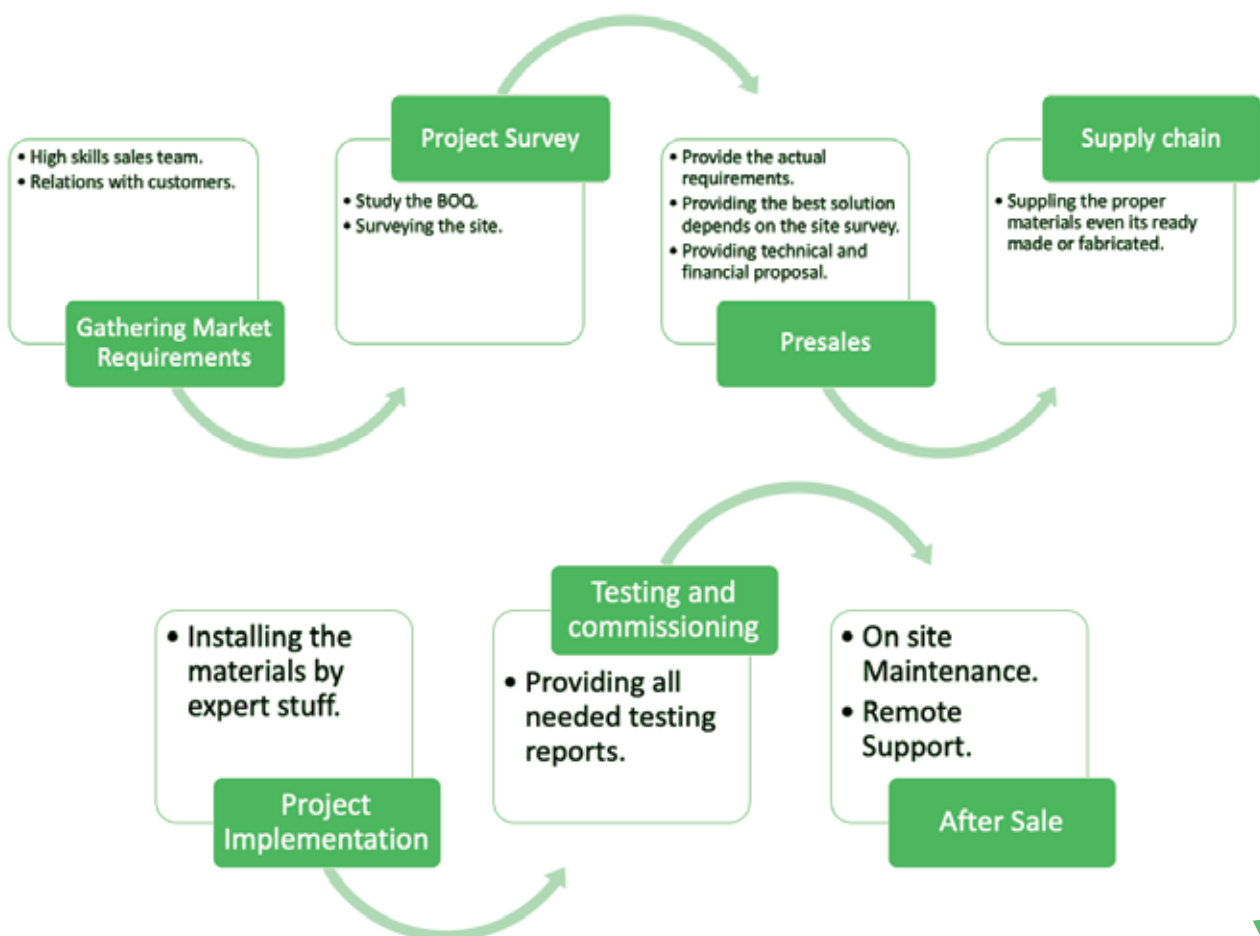
We Provide Maintenance Contract (On call Maintenance contract and Annual Maintenance Contract) service to customers to help keep their products in proper working condition.

This service signed between the company and the customer to allow regular checkups and routine work to keep the performance and quality of the products in good condition. These services are provided for technical support as well as renewal of the software and various other anti-viruses.

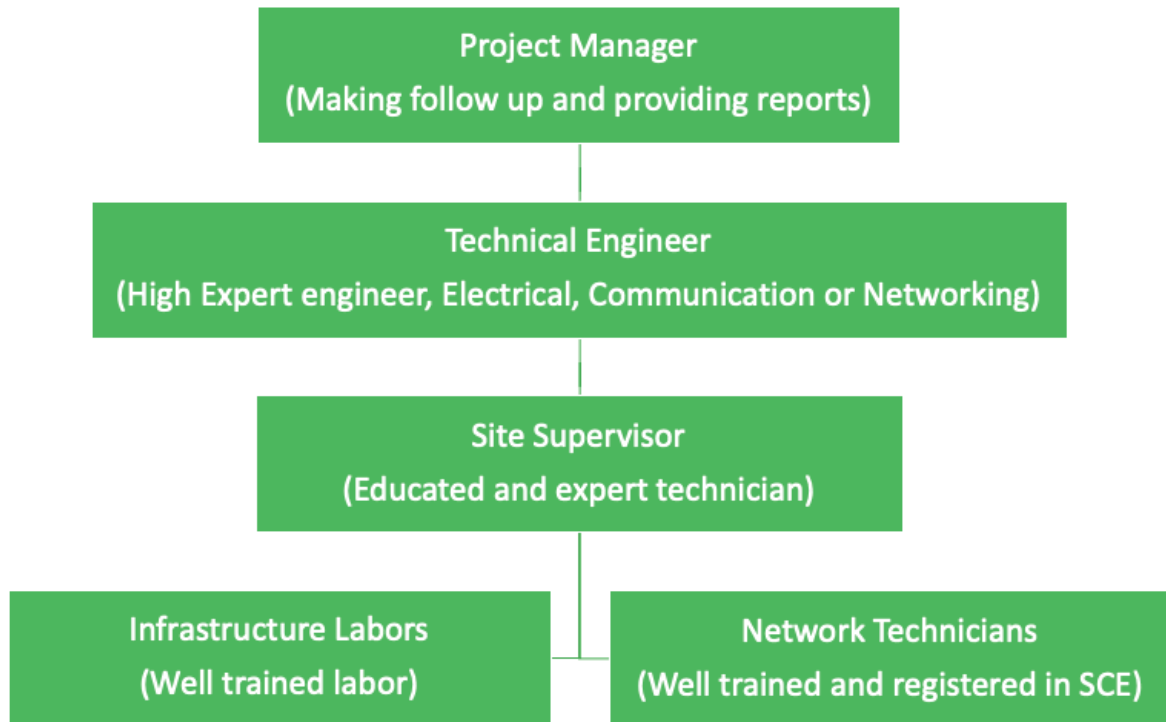
Technical Services has been formulated recently to become a powerful arm to provide practical Support as well as Solutions for Installation, Commissioning and Maintenance activities as well as customer training needs.



How Etad Soltions Handling The Projects?



Project Stuff Hierarchy





ETAD Solutions Stuff Training Courses

Etad Solutions providing their technicians many types of training either online training or office trainings:

1. Passive components training: Etad Solutions provide their stuff a full training built on (TIA) standards for many brands like CommScope, Leviton, Corning, MMC.....etc.
2. Communication Training: Etad Solutions provide their stuff a full training to install wireless components and antenna and teach them how to make signal analyzing for the site using powerful devices.
3. Devices Configuration: Etad Solutions provide their stuff a full training to configure the active devices such as CCTV, Switching, Routing, Gateways, Access points, Controllers...etc. **NOTE: This training is specially for engineers.**
4. Safety Training: Etad Solutions provide their stuff a full training for safety to enhance the stuff dealing with the site tools and materials, and how to take all the requirements precautions either by dressing the safety clothes or acting with the current criteria (Climbing towers, using ladders, acting with power, acting with detergents....etc.).

**” High Quality
Professional
Installations is
achieved by
creative
design**

OUR SUPPLIERS



 **Saudi Arabia**

 **+966 11 20 44 579**

 **info@etad-solutions.com**
presales@etad-solutions.com

 **www.etad-solutions.com**

